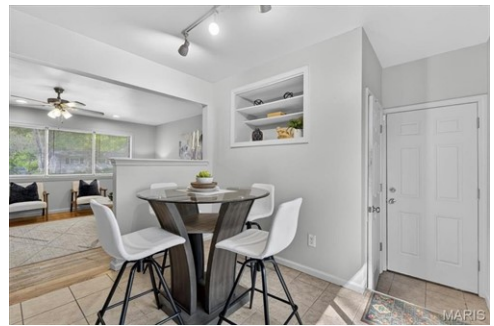




\$ 118,500



272 Elmdale Dr, Ferguson, MO 63135

- » Beds: 4 | Baths: 1 Full
- » MLS #: 26012170
- » Single Family | 960 ft² | Lot: 7,501 ft²
- » More Info: [272ElmdaleDr.lsForSale.com](http://www.272ElmdaleDr.lsForSale.com)



Everett Hughes
 (314) 691-5081
Everetthughes@stlgoldhomes.com
<http://www.everetthughes@remax.net>



RE/MAX Results
 8081 Manchester Rd
 St. Louis, MO 63144
 (314) 462-9207

Welcome to your charming new home in the desirable Forestwood Subdivision! This freshly painted 3-bedroom, 1-bath ranch is move-in ready and full of updates. Step inside to find beautiful hardwood floors that flow through the living area and into all three bedrooms. The heart of the home is the spacious eat-in kitchen, which features ceramic tile flooring, a stylish tile backsplash, and classic wood cabinetry. The kitchen comes fully equipped with an electric oven, refrigerator, and disposal. Just off the kitchen, sliding glass doors lead you to a private patio, perfect for outdoor dining, or the stairs leading to a spacious finished lower level family room and bonus area for an office or bedroom. The level fenced backyard offers a great space for recreation or pets, while the 3-car side driveway provides ample off-street parking. Key Features Include: 3 Bedrooms & 1 Bathroom Freshly Painted Interior with neutral tones Spacious Finished Lower Level Family room Bonus Finished Lower Level room for office or sleeping Hardwood Floors in the main living areas and bedrooms Ceramic Tile in the kitchen and bathroom Kitchen Upgrades: Tile backsplash and included appliances Outdoor Living: Level fenced yard and patio Parking: 3-car side driveway Don't miss out on this wonderful home-it's the perfect blend of comfort and convenience!

